

Module 8.3

# Programming BASYS 2 Board

# Jumper 3

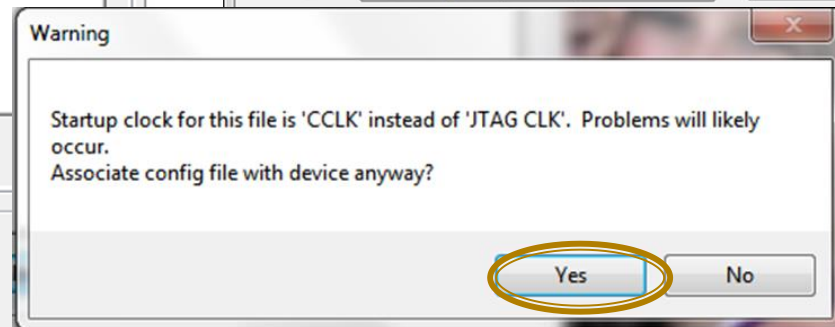
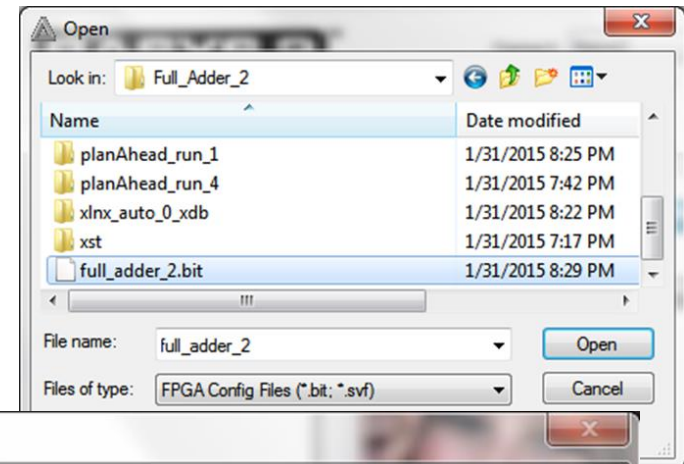
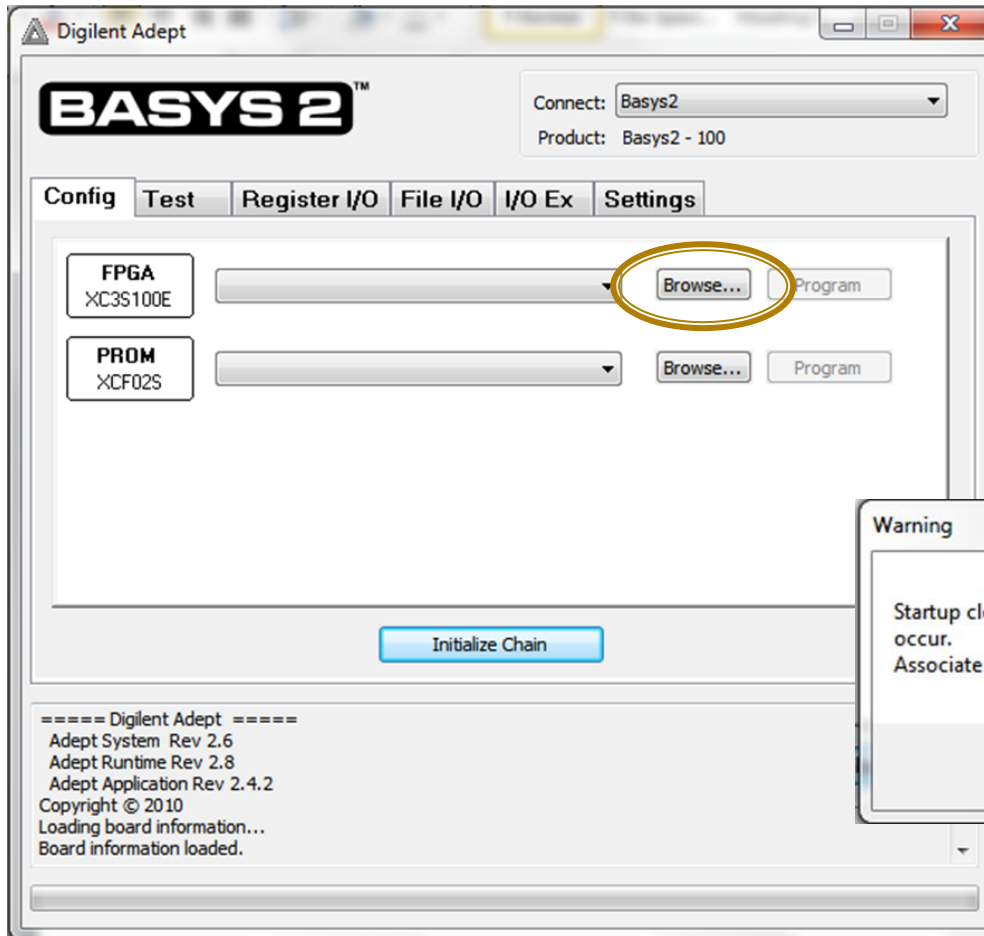
Make Sure JP3 is connected to PC



# Using Adept

- Plug the BASYS 2 board into your computer & let your computer install the device drivers needed
- Open the Adept Application
  - Select BASYS2 on the drop down menu
  - Click the initialize chain button
    - The software should pick up the FPGA and PROM devices

# Adept Software



# Summary

- You first need to create a (\*.bit) file in Xilinx ISE
- Adept is used only to program your development board